

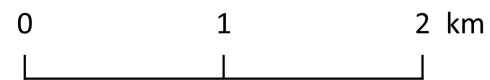
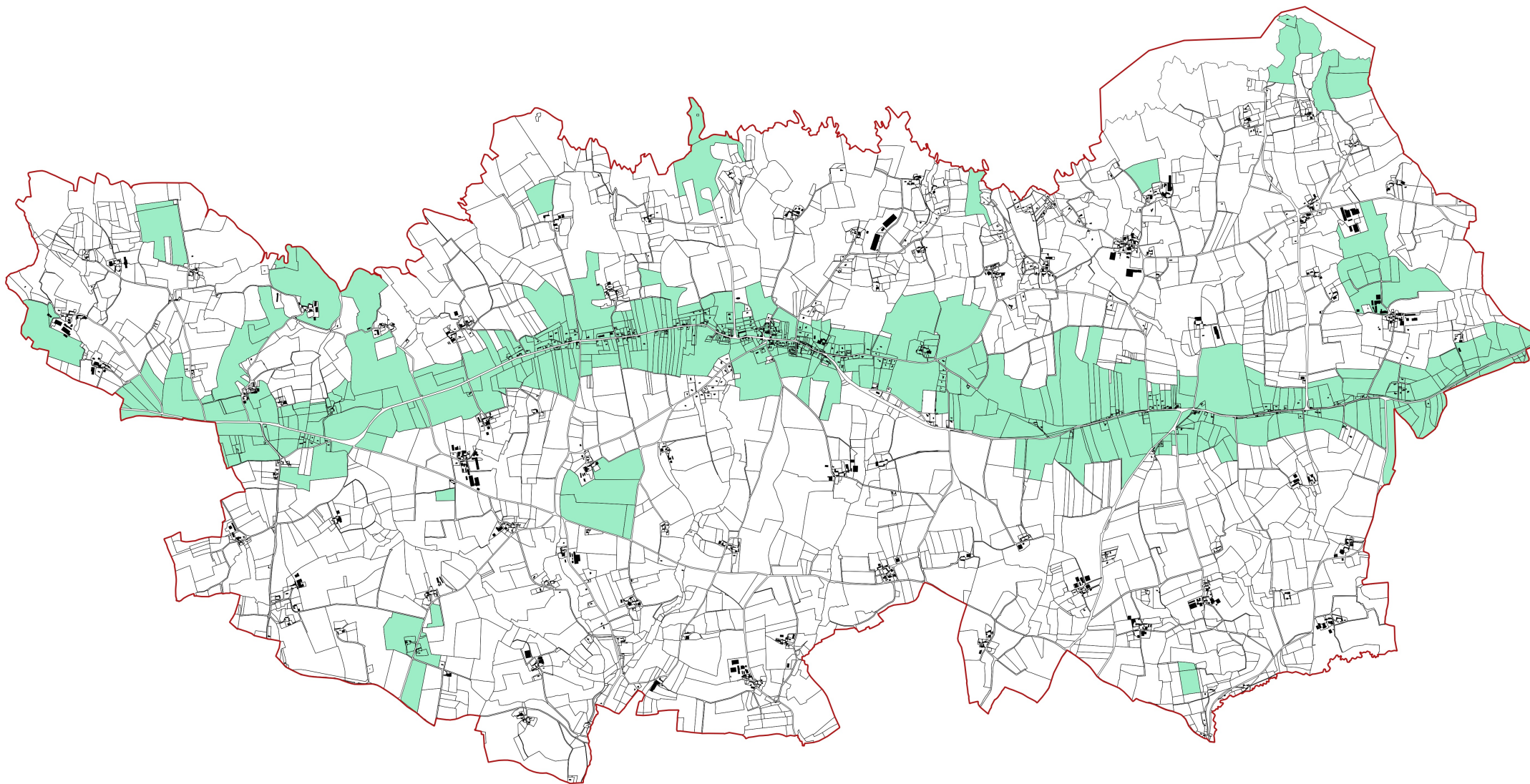
# **PLAN LOCAL D'URBANISME**

**COMMUNE DE BEUZEC-CAP-SIZUN**

## **5.4 ZONAGE ARCHEOLOGIQUE**

# Commune de Beuzec-Cap-Sizun

## Les zones de présomption de prescription archéologique





# LISTE DES ZONES DE PROTECTIONS DEMANDEES AU PLU AU TITRE DE L'ARCHEOLOGIE

Service régional de  
l'archéologie

mercredi 25 novembre 2015

## BEUZEC-CAP-SIZUN

| N° de Zone | Parcelles           | Identification de l'EA   |
|------------|---------------------|--|
| 1          | 2015 : ZD.109       | 1252 / 29 008 0001 / BEUZEC-CAP-SIZUN / LUGUENEZ / LUGUENEZ / menhir / Néolithique         |
| 2          | 2015 : ZO.8         | 1250 / 29 008 0002 / BEUZEC-CAP-SIZUN / KERBALANEC / KERBALANEC / dolmen / Néolithique     |
| 3          | 2015 : YE.42        | 1244 / 29 008 0004 / BEUZEC-CAP-SIZUN / MERDY / MERDY / dolmen / Néolithique ?             |
| 4          | 2015 : ZA.168;ZA.26 | 1245 / 29 008 0005 / BEUZEC-CAP-SIZUN / KERGONOUY / KERGONOUY / occupation / Néolithique ? |

| N° de Zone | Parcelles  | Identification de l'EA  |
|------------|--|---|
| 5          | 2015 : ZC.2  | 1247 / 29 008 0007 / BEUZEC-CAP-SIZUN / LESVEN / LESVEN / tumulus / Age du bronze                       |
| 6          | 2015 : ZA.219;ZA.220   | 1248 / 29 008 0008 / BEUZEC-CAP-SIZUN / KERSOAL / KERSOAL / tumulus / Age du bronze                     |
| 7          | 2015 : ZN.193  | 1249 / 29 008 0009 / BEUZEC-CAP-SIZUN / BARQUE DE ST CONOGAN / LILLOUREN / menhir / Néolithique         |
| 8          | 2015 : ZR.201;ZR.203;ZR.205;ZR.213   | 1355 / 29 008 0011 / BEUZEC-CAP-SIZUN / PARK AL LION / KERRODOU / tumulus / Age du bronze ancien        |
| 9          | 2015 : ZB.160;ZB.206   | 1356 / 29 008 0012 / BEUZEC-CAP-SIZUN / KERIFFEN / PARK-AR-C'HARNIEL / tumulus / Age du bronze ?        |
| 10         | 2015 : ZN.121;ZN.122;ZN.123  | 3126 / 29 008 0013 / BEUZEC-CAP-SIZUN / POINTE DE MILLEC / POINTE DE MILLEC / occupation / Mésolithique |
| 11         | 2015 : YE.12;YE.13;YE.14;YE.16;YE.18;YE.37;YE.38;YE.39;YH.20;YH.21;YH.22;YH.69;YH.73;YH.74;YH.75 | 10968 / 29 008 0014 / BEUZEC-CAP-SIZUN / KERZEON / KERZEON / habitat / Gallo-romain                     |

| N° de Zone | Parcelles   | Identification de l'EA   |
|------------|---|--|
| 12         | 2015 : ZN.245;ZO.10;ZO.131;ZO.34;ZO.4;ZO.5;ZO.6;ZO.7;ZO.9 | 14336 / 29 008 0015 / BEUZEC-CAP-SIZUN / KERBALANEC / KERBALANEC / tumulus / Age du bronze                                     |
| 13         | 2015 : ZN.1;ZN.2  | 1137 / 29 008 0016 / BEUZEC-CAP-SIZUN / LILLOUREN / LILLOUREN / production de sel / Haut-empire                                |
| 14         | 2015 : ZE.117;ZE.118;ZE.250                               | 3127 / 29 008 0019 / BEUZEC-CAP-SIZUN / CASTEL COZ / CASTEL COZ/POINTE DU BEUZEC / éperon barré / Age du bronze - Age du fer ? |
| 15         | 2015 : ZY.254;ZY.4;ZY.69;ZY.70                            | 11677 / 29 008 0020 / BEUZEC-CAP-SIZUN / TRELAZ / TRELAZ / exploitation agricole / Second Age du fer                           |
| 16         | 2015 : ZM.121   | 20407 / 29 008 0027 / BEUZEC-CAP-SIZUN / KERBEUZEC / KERBEUZEC / occupation / Mésolithique                                     |
| 17         | 2015 : YE.27  | 20408 / 29 008 0028 / BEUZEC-CAP-SIZUN / KERGATHOUARN / KERGATHOUARN / occupation / Mésolithique - Néolithique                 |
| 18         | 2015 : YC.78  | 20412 / 29 008 0032 / BEUZEC-CAP-SIZUN / KERMENGUY / KERMENGUY / stèle funéraire / Age du fer                                  |

| N° de Zone | Parcelles            | Identification de l'EA  |
|------------|----------------------|---|
| 19         | 2015 : ZI.251        | 20413 / 29 008 0033 / BEUZEC-CAP-SIZUN / KERNEIS / KERNEIS / occupation / Gallo-romain                  |
| 20         | 2015 : ZB.109;ZB.233 | 20415 / 29 008 0035 / BEUZEC-CAP-SIZUN / KERVIGOUDOU / KERVIGOUDOU / éperon barré / Epoque indéterminée |

| N° de Zone | Parcelles  | Identification de l'EA  |
|------------|--|---|
| 21         | <p>2015 :</p> <p>YB.161;YB.162;YB.163;YB.164;YB.165;YB.180;YB.181;YB.182;YB.183;YB.196;YB.197;YB.199;YB.206;YB.210;YB.217;YB.219;YB.222;YB.223;YB.224;YB.225;YB.226;YB.227;YB.229;YB.230;YB.231;YB.232;YB.233;YB.237;YB.240;YB.241;YB.244;YB.252;YB.253;YB.256;YB.257;YB.258;YB.259;YB.260;YB.261;YB.4;YB.5;YB.6;YB.8;YC.1;YC.112;YC.133;YC.135;YC.139;YC.143;YC.145;YC.147;YC.149;YC.151;YC.153;YC.155;YC.157;YC.159;YC.161;YC.164;YC.165;YC.167;YC.169;YC.176;YC.177;YC.178;YC.179;YC.18;YC.19;YC.193;YC.194;YC.195;YC.196;YC.197;YC.198;YC.22;YC.23;YC.25;YC.26;YC.27;YC.28;YC.31;YC.34;ZA.147;ZA.149;ZA.151;ZA.153;ZA.41;ZA.45;ZB.1;ZB.124;ZB.126;ZB.127;ZB.142;ZB.144;ZB.146;ZB.148;ZB.152;ZB.154;ZB.172;ZB.184;ZB.185;ZB.186;ZB.187;ZB.218;ZB.58;ZB.8;ZB.82;ZB.83;ZC.100;ZC.101;ZC.102;ZC.112;ZC.118;ZC.119;ZC.120;ZC.121;ZC.141;ZC.142;ZC.143;ZC.144;ZC.145;ZC.146;ZC.147;ZC.148;ZC.149;ZC.151;ZC.152;ZC.158;ZC.159;ZC.160;ZC.161;ZC.162;ZC.163;ZC.164;ZC.25;ZC.28;ZC.31;ZC.40;ZC.41;ZC.42;ZC.46;ZC.47;ZC.49;ZC.50;ZC.87;ZC.88;ZC.89;ZC.91;ZC.94;ZC.95;ZC.96;ZC.97</p>  | <p>1246 / 29 008 0006 / BEUZEC-CAP-SIZUN / COAT-PIN / COAT-PIN / tumulus / nécropole / Age du bronze</p>  |
|            |  | <p>20519 / 29 008 0042 / BEUZEC-CAP-SIZUN / VOIE CARHAIX/DOUARNENEZ dite "HENT-AHES" / Section unique de Kerbalannec-Vihan à Mesgall / route / Gallo-romain - Période récente</p> |
|            | <p>2015 :</p> <p>ZC.99;ZD.130;ZD.131;ZD.145;ZD.151;ZD.152;ZD.159;ZD.16;ZD.165;ZD.167;ZD.171;ZD.177;ZD.178;ZD.182;ZD.191;ZD.192;ZD.195;ZD.199;ZD.20;ZD.200;ZD.201;ZD.202;ZD.203;ZD.207;ZD.208;ZD.209;ZD.210;ZD.211;ZD.212;ZD.213;ZD.214;ZD.215;ZD.216;ZD.217;ZD.218;ZD.219;ZD.220;ZD.221;ZD.222;ZD.223;ZD.224;ZD.225;ZD.226;ZD.227;ZD.228;ZD.229;ZD.23;ZD.230;ZD.231;ZD.24;ZD.25;ZD.26;ZD.27;ZD.28;ZD.29;ZD.30;ZD.46;ZD.47;ZD.50;ZD.69;ZD.70;ZD.71;ZD.82;ZD.86;ZD.87;ZD.88;ZD.89;ZD.90;ZD.91;ZD.92;ZE.101;ZE.103;ZE.104;ZE.105;ZE.106;ZE.148;ZE.157;ZE.159;ZE.167;ZE.168;ZE.169;ZE.171;ZE.173;ZE.175;ZE.176;ZE.177;ZE.179;ZE.183;ZE.184;ZE.185;ZE.186;ZE.187;ZE.188;ZE.189;ZE.190;ZE.191;ZE.194;ZE.195;ZE.196;ZE.197;ZE.198;ZE.199;ZE.201;ZE.203;ZE.205;ZE.207;ZE.209;ZE.211;ZE.216;ZE.224;ZE.226;ZE.227;ZE.234;ZE.236;ZE.238;ZE.240;ZE.241;ZE.242;ZE.259;ZE.261;ZE.262;ZE.263;ZE.264;ZE.266;ZE.268;ZE.269;ZE.270;ZE.276;ZE.277;ZE.278;ZE.282;ZE.283;ZE.284;ZE.285;ZE.286;ZE.288;ZE.289;ZE.295;ZE.296;ZE.297;ZE.298;ZE.299;ZE.300;ZE.303;ZE.304;ZE.306;ZE.307;ZE.308;ZE.310</p> | <p>1246 / 29 008 0006 / BEUZEC-CAP-SIZUN / COAT-PIN / COAT-PIN / tumulus / nécropole / Age du bronze</p>  |
|            | <p>20519 / 29 008 0042 / BEUZEC-CAP-SIZUN / VOIE CARHAIX/DOUARNENEZ dite "HENT-AHES" / Section unique de Kerbalannec-Vihan à Mesgall / route / Gallo-romain - Période récente</p>  |   |
| 21         | <p>2015 :</p> <p>ZE.311;ZE.313;ZE.314;ZE.315;ZE.316;ZE.318;ZE.319;ZE.321;ZE.322;ZE.323;ZE.324;ZE.325;ZE.44;ZE.47;ZE.50;ZE.62;ZE.63;ZE.64;ZE.69;ZE.72;ZE.76;ZE.79;ZE.80;ZE.81;ZE.82;ZE.83;ZE.84;ZE.85;ZE.90;ZE.91;ZE.93;ZE.94;ZE.95;ZE.96;ZE.97;ZH.106;ZH.107;ZH.108;ZH.109;ZH.110;ZH.117;ZH.118;ZH.119;ZH.120;ZH.121;ZH.122;ZH.123;ZH.124;ZH.126;ZH.127;ZH.130;ZH.169;ZH.170;ZH.171;ZH.172;ZH.182;ZH.183;ZH.184;ZH.185;ZH.191;ZH.193;ZH.194;ZH.196;ZH.208;ZH.209;ZH.211;ZH.213;ZH.215;ZH.217;ZH.219;ZH.221;ZH.226;ZH.229;ZH.24;ZH.246;ZH.247;ZH.25;ZH.27;ZH.30;ZH.308;ZH.309;ZH.310;ZH.320;ZH.321;ZH.322;ZH.323;ZH.324;ZH.327;ZH.328;ZH.329;ZH.330;ZH.331;ZH.332;ZH.333;ZH.334;ZH.337;ZH.338;ZH.339;ZH.340;ZH.341;ZH.342;ZH.343;ZH.35;ZH.352;ZH.353;ZH.354;ZH.36;ZH.363;ZH.364;ZH.74;ZH.76;ZH.77;ZH.78;ZH.79;ZH.80;ZH.81;ZH.82;ZK.103;ZK.104;ZK.105;ZK.106;ZK.107;ZK.108;ZK.109;ZK.110;ZK.111;ZK.112;ZK.113;ZK.114;ZK.115;ZK.124;ZK.37;ZK.38;ZK.39;ZK.44;ZK.48;ZK.49;ZK.5;ZK.50;ZK.56;ZK.57;ZK.63;ZK.64;ZK.65;ZK.66;ZK.67;ZK.68;ZK.69;ZK.70;ZK.72;ZK.74;ZK.78;ZK.83;ZK.84</p>  | <p>1246 / 29 008 0006 / BEUZEC-CAP-SIZUN / COAT-PIN / COAT-PIN / tumulus / nécropole / Age du bronze</p>  |
|            |  | <p>20519 / 29 008 0042 / BEUZEC-CAP-SIZUN / VOIE CARHAIX/DOUARNENEZ dite "HENT-AHES" / Section unique de Kerbalannec-Vihan à Mesgall / route / Gallo-romain - Période récente</p> |
| 21         | <p>2015 :</p> <p>ZK.95;ZK.97;ZL.109;ZL.118;ZL.119;ZL.120;ZL.121;ZL.123;ZL.129;ZL.130;ZL.131;ZL.132;ZL.133;ZL.134;ZL.147;ZL.148;ZL.159;ZL.164;ZL.165;ZL.166;ZL.167;ZL.169;ZL.170;ZL.171;ZL.173;ZL.174;ZL.175;ZL.176;ZL.177;ZL.178;ZL.179;ZL.180;ZL.181;ZL.182;ZL.183;ZL.184;ZL.185;ZL.186;ZL.187;ZL.188;ZL.189;ZL.190;ZL.191;ZL.192;ZL.193;ZL.194;ZL.195;ZL.196;ZL.198;ZL.199;ZL.200;ZL.203;ZL.204;ZL.205;ZL.206;ZL.207;ZL.208;ZL.209;ZL.210;ZL.62;ZL.68;ZL.73;ZL.75;ZL.77;ZL.80;ZL.83;ZL.84;ZO.106;ZO.107;ZO.108;ZO.109;ZO.110;ZO.111;ZO.112;ZO.113;ZO.114;ZO.115;ZO.118;ZO.121;ZO.122;ZO.123;ZO.133;ZO.134;ZO.140;ZO.141;ZO.142;ZO.143;ZO.144;ZO.145;ZO.146;ZO.147;ZO.150;ZO.154;ZO.160;ZO.161;ZO.179;ZO.180;ZO.181;ZO.188;ZO.189;ZO.190;ZO.191;ZO.192;ZO.194;ZO.195;ZO.198;ZO.200;ZO.201;ZO.202;ZO.203;ZO.204;ZO.205;ZO.206;ZO.207;ZO.216;ZO.217;ZO.218;ZO.219;ZO.220;ZO.221;ZO.222;ZO.223;ZO.224;ZO.225;ZO.226;ZO.230;ZO.231;ZO.232;ZO.233;ZO.234;ZO.235;ZO.24;ZO.240;ZO.241;ZO.37;ZO.39;ZO.84;ZO.85;ZO.86;ZO.87;ZO.88;ZO.89;ZO.90;ZO.91;ZO.92;ZO.93;ZO.95</p>              | <p>1246 / 29 008 0006 / BEUZEC-CAP-SIZUN / COAT-PIN / COAT-PIN / tumulus / nécropole / Age du bronze</p>  |
|            |  | <p>20519 / 29 008 0042 / BEUZEC-CAP-SIZUN / VOIE CARHAIX/DOUARNENEZ dite "HENT-AHES" / Section unique de Kerbalannec-Vihan à Mesgall / route / Gallo-romain - Période récente</p> |

| N° de Zone | Parcelles   | Identification de l'EA  |
|------------|---|---|
| 21         | <p>2015 :<br/> ZO.97;ZO.98;ZP.1;ZP.113;ZP.114;ZP.118;ZP.128;ZP.129;ZP.130;ZP.131;ZP.134;ZP.136;ZP.137;ZP.138;ZP.146;ZP.148;ZP.149;ZP.164;ZP.165;ZP.166;ZP.167;ZP.168;ZP.169;ZP.170;ZP.171;ZP.172;ZP.173;ZP.174;ZP.175;ZP.176;ZP.177;ZP.178;ZP.179;ZP.180;ZP.181;ZP.182;ZP.183;ZP.184;ZP.185;ZP.186;ZP.187;ZP.188;ZP.189;ZP.190;ZP.191;ZP.192;ZP.193;ZP.194;ZP.195;ZP.2;ZP.207;ZP.208;ZP.3;ZP.5;ZP.6;ZP.7;ZP.8;ZP.9;ZS.108;ZS.110;ZS.121;ZS.124;ZS.125;ZS.126;ZS.130;ZS.132;ZS.144;ZS.153;ZS.170;ZS.171;ZS.173;ZS.209;ZS.210;ZS.211;ZS.212;ZS.213;ZS.217;ZS.218;ZS.219;ZS.220;ZS.223;ZS.224;ZS.225;ZS.226;ZS.227;ZS.228;ZS.229;ZS.230;ZS.231;ZS.232;ZS.233;ZS.234;ZS.235;ZS.236;ZS.237;ZS.238;ZS.239;ZS.240;ZS.241;ZS.242;ZS.243;ZS.25;ZS.257;ZS.259;ZS.260;ZS.261;ZS.262;ZS.263;ZS.264;ZS.265;ZS.266;ZS.267;ZS.268;ZS.269;ZS.270;ZS.271;ZS.272;ZS.275;ZS.276;ZS.277;ZS.278;ZS.279;ZS.28;ZS.280;ZS.281;ZS.282;ZS.32;ZS.65;ZS.69;ZS.70;ZS.73;ZS.74;ZS.75;ZS.76;ZS.78;ZS.79;ZS.80;ZS.81;ZS.82;ZS.89;ZS.90;ZT.102;ZT.103;ZT.105;ZT.108;ZT.110;ZT.112;ZT.114;ZT.124;ZT.13</p>    | <p>1246 / 29 008 0006 / BEUZEC-CAP-SIZUN / COAT-PIN / COAT-PIN / tumulus / nécropole / Age du bronze</p>  |
|            |   | <p>20519 / 29 008 0042 / BEUZEC-CAP-SIZUN / VOIE CARHAIX/DOUARNENEZ dite "HENT-AHES" / Section unique de Kerbalannec-Vihan à Mesgall / route / Gallo-romain - Période récente</p> |
| 21         | <p>2015 :<br/> ZT.16;ZT.160;ZT.161;ZT.18;ZT.187;ZT.188;ZT.189;ZT.190;ZT.194;ZT.200;ZT.201;ZT.202;ZT.203;ZT.204;ZT.205;ZT.206;ZT.207;ZT.208;ZT.210;ZT.212;ZT.214;ZT.228;ZT.237;ZT.238;ZT.239;ZT.256;ZT.257;ZT.258;ZT.260;ZT.261;ZT.262;ZT.263;ZT.264;ZT.265;ZT.266;ZT.267;ZT.269;ZT.270;ZT.35;ZT.36;ZT.37;ZT.38;ZT.39;ZT.50;ZT.51;ZT.52;ZT.8;ZT.86;ZT.94;ZT.98;ZX.14;ZX.157;ZX.158;ZX.159;ZX.163;ZX.168;ZX.17;ZX.173;ZX.186;ZX.188;ZX.190;ZX.211;ZX.212;ZX.216;ZX.218;ZX.219;ZX.220;ZX.222;ZX.224;ZX.226;ZX.234;ZX.235;ZX.236;ZX.237;ZX.239;ZX.240;ZX.241;ZX.244;ZX.245;ZX.246;ZX.250;ZX.251;ZX.258;ZX.260;ZX.261;ZX.262;ZX.269;ZX.270;ZX.271;ZX.272;ZX.273;ZX.274;ZX.275;ZX.276;ZX.277;ZX.279;ZX.280;ZX.281;ZX.282;ZX.284;ZX.285;ZX.286;ZX.287;ZX.288;ZX.289;ZX.290;ZX.291;ZX.292;ZX.293;ZX.294;ZX.295;ZX.297;ZX.298;ZX.299;ZX.300;ZX.301;ZX.303;ZX.304;ZX.305;ZX.306;ZX.38;ZX.39;ZX.64;ZX.65;ZX.67;ZX.68;ZX.69;ZX.70;ZX.71;ZX.74;ZX.79;ZX.80;ZX.82;ZX.83;ZX.84;ZX.85;ZX.86;ZX.87;ZX.88;ZX.89;ZX.90;ZX.91;ZX.92;ZY.101;ZY.102;ZY.103;ZY.104;ZY.105;ZY.111;ZY.138;ZY.141</p> | <p>1246 / 29 008 0006 / BEUZEC-CAP-SIZUN / COAT-PIN / COAT-PIN / tumulus / nécropole / Age du bronze</p>  |
|            |   | <p>20519 / 29 008 0042 / BEUZEC-CAP-SIZUN / VOIE CARHAIX/DOUARNENEZ dite "HENT-AHES" / Section unique de Kerbalannec-Vihan à Mesgall / route / Gallo-romain - Période récente</p> |
| 21         | <p>2015 :<br/> ZY.142;ZY.143;ZY.145;ZY.147;ZY.151;ZY.153;ZY.159;ZY.166;ZY.168;ZY.172;ZY.174;ZY.175;ZY.176;ZY.177;ZY.178;ZY.180;ZY.182;ZY.183;ZY.184;ZY.185;ZY.186;ZY.188;ZY.190;ZY.192;ZY.193;ZY.194;ZY.196;ZY.197;ZY.199;ZY.203;ZY.231;ZY.232;ZY.233;ZY.234;ZY.235;ZY.236;ZY.237;ZY.24;ZY.242;ZY.244;ZY.245;ZY.25;ZY.261;ZY.262;ZY.264;ZY.266;ZY.267;ZY.27;ZY.28;ZY.291;ZY.293;ZY.294;ZY.31;ZY.32;ZY.38;ZY.42;ZY.43;ZY.78;ZY.79;ZY.80;ZY.81;ZY.82;ZY.84;ZY.87;ZY.88;ZY.89;ZY.91;ZY.94;ZY.96</p>  | <p>1246 / 29 008 0006 / BEUZEC-CAP-SIZUN / COAT-PIN / COAT-PIN / tumulus / nécropole / Age du bronze</p>  |
|            |   | <p>20519 / 29 008 0042 / BEUZEC-CAP-SIZUN / VOIE CARHAIX/DOUARNENEZ dite "HENT-AHES" / Section unique de Kerbalannec-Vihan à Mesgall / route / Gallo-romain - Période récente</p> |